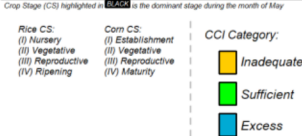
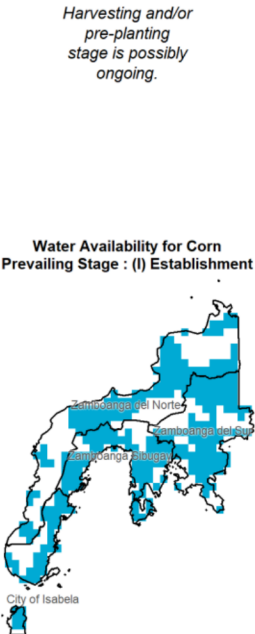


Region IX (Zamboanga Peninsula)

Water Availability for Rice
Prevailing Stage : None

Provincial Values

	Mon. Ave. Rainfall (mm)	Rice		Corn	
		CS	CCI (%)	CS	CCI (%)
City of Isabela	310.0	I	158.9	I	281.3
		II	148.1	II	217.1
		III	143.1	III	179.5
		IV	206.5	IV	215.2
Zamboanga del Norte	400.5	I	270.1	I	437.2
		II	256.8	II	353.3
		III	250.8	III	303.5
		IV	329.9	IV	350.7
Zamboanga del Sur	384.4	I	431.1	I	546.8
		II	424.3	II	500.7
		III	421.2	III	471.6
		IV	460.2	IV	499.3
Zamboanga Sibugay	437.2	I	448.4	I	613.3
		II	438.9	II	556.6
		III	434.6	III	521.7
		IV	490.0	IV	554.8



Regional Summary

The rainfall received throughout the month was excessive, which is due to the Intertropical Convergence Zone (ITCZ). The corn crops that were still in the establishment stage likely experienced stress due to waterlogging.

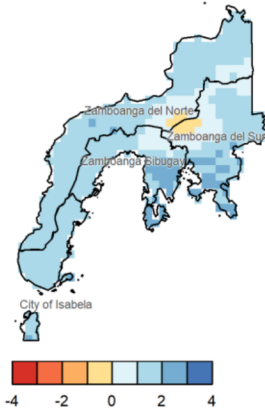
The SPEI3 shows slightly above to above normal conditions in the past three months in the entire region, which could be beneficial for the standing crops in the presence of effective drainage systems.

The extreme rainfall indices RX1day and RX5day indicate 50 to 100 millimeters and 100 to 200 millimeters of rainfall, respectively. This amount of rainfall is good for the standing crops during their vegetative stage and also for land preparation for the rice crops.

NDVI

NDVI satellite data not yet available.

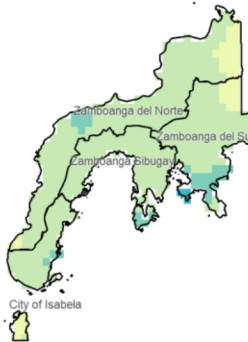
SPEI3 (Mar-Apr-May)



RX1day



RX5day



City of Isabela Zamboanga del Norte Zamboanga del Sur Zamboanga Sibugay

